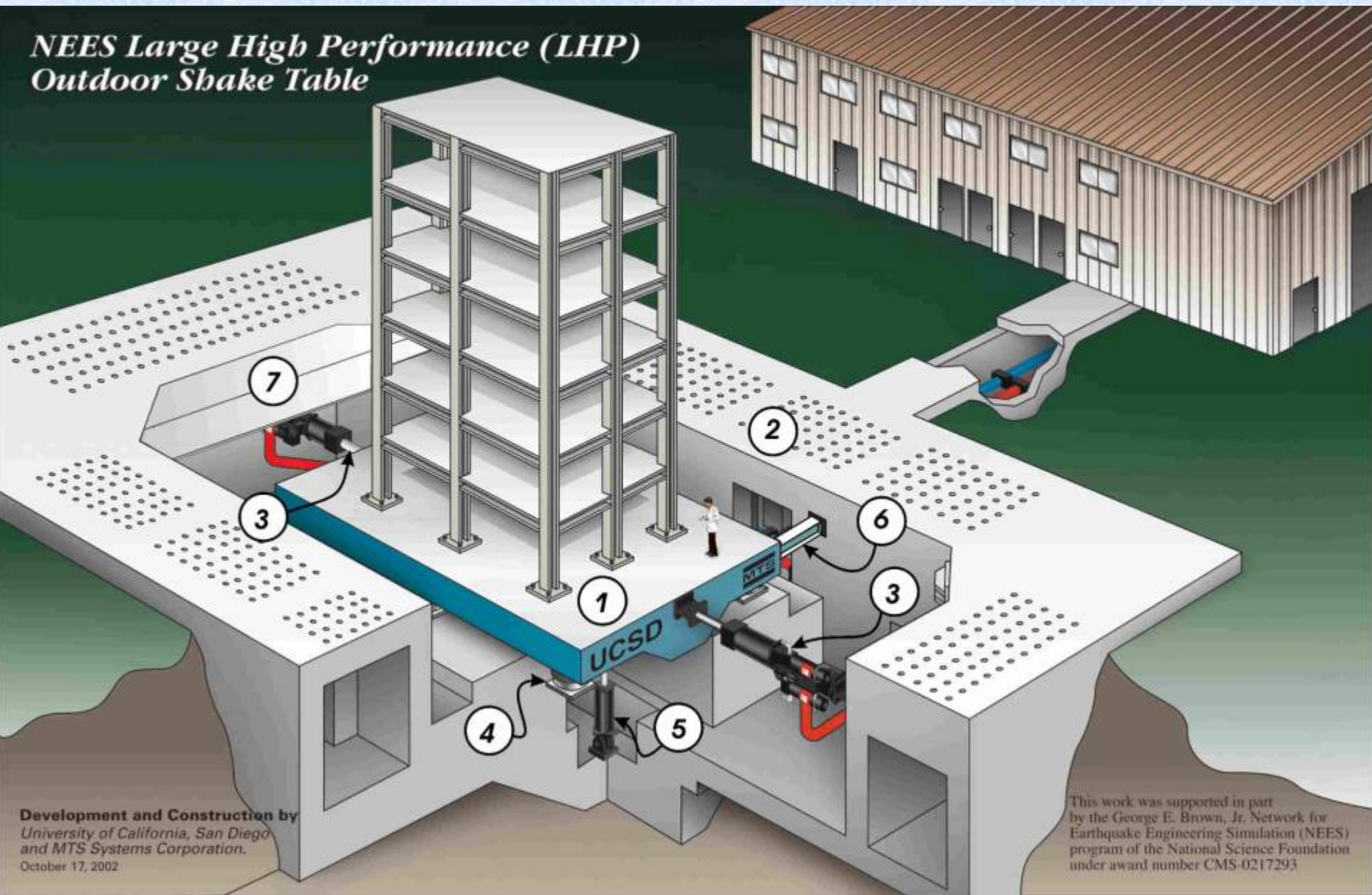


UCSD-NEES Large High Performance Outdoor Shake Table (LHPOST)

NEES Large High Performance (LHP) Outdoor Shake Table



Development and Construction by
University of California, San Diego
and MTS Systems Corporation.
October 17, 2002

This work was supported in part
by the George E. Brown, Jr. Network for
Earthquake Engineering Simulation (NEES)
program of the National Science Foundation
under award number CMS-0217293

LHPOST Capabilities

Single DOF upgradeable to 6 DOF

Size: 7.6 m wide by 12.2 m long

Stroke: ± 0.75 m

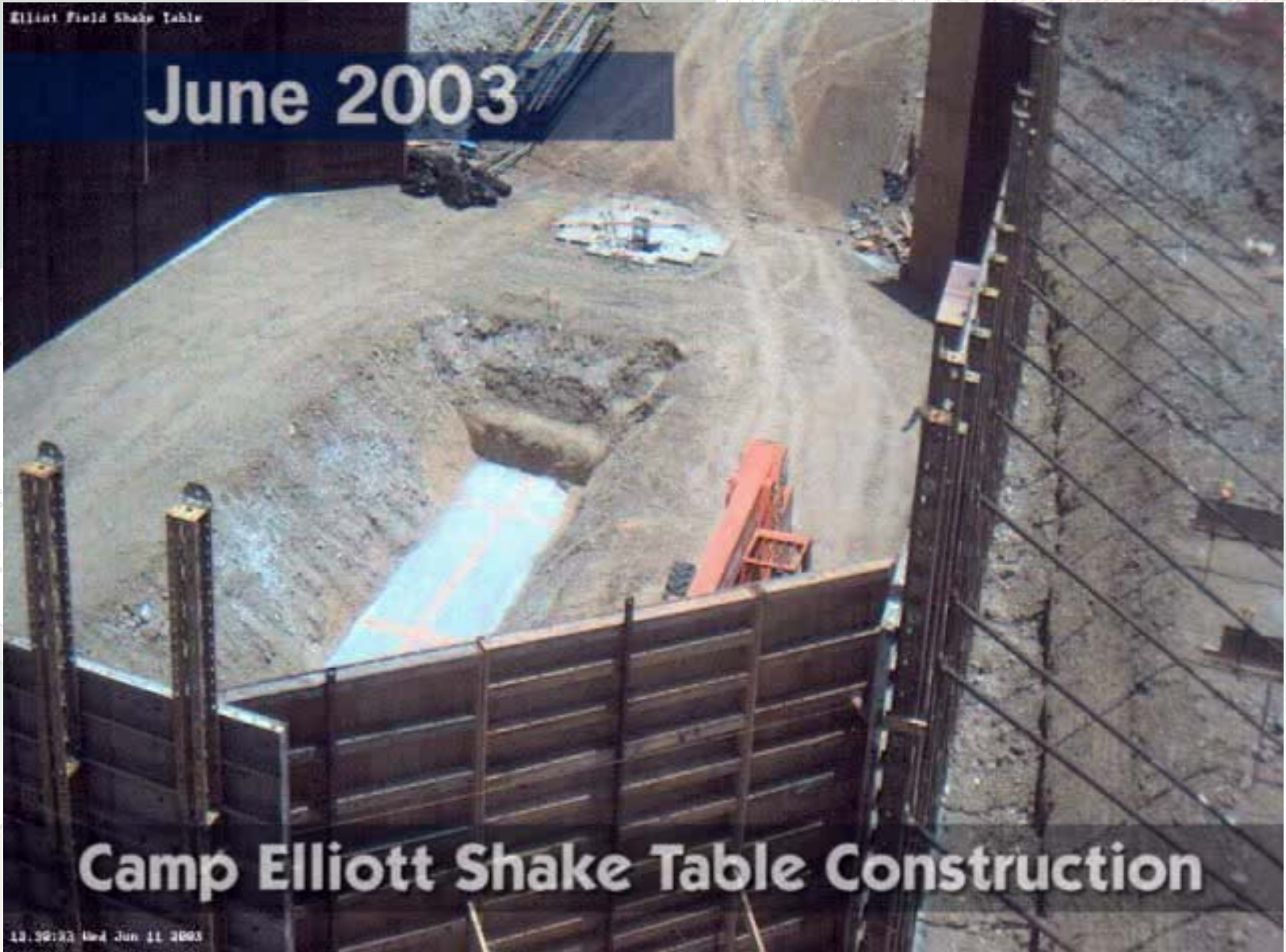
Peak horizontal velocity: 1.8 m/s

Horizontal force capacity: 6.8 MN

Overturning moment capacity: 50MN-m for a 400 ton specimen

Vertical payload capacity: 20MN

Testing frequency range: 0-20 Hz





Sinusoid 1.1 Hz



Northridge Earthquake Full Scale 1.8 G

